

Rödl & Partner

LESSONS FOR EDUCATORS: A PERSPECTIVE FROM PRACTICE

AUDIT
EXCELLENCE²

Martin Wambach
Frankfurt, January 21, 2025



EAA EFRAG ISSB Sustainability Reporting Standards Education Workshop

Frankfurt School of Finance and Management

January 20th – 21st 2025

MARTIN WAMBACH



Since 01.07.1992 active at Rödl & Partner

Managing Partner

CEO of the German Professional Services Alliance – GPSA

Business Graduate, Auditor, Tax Consultant,
Certified Sustainability Assurance Expert^{FS}, IT-Auditor^{IDW}

Member of the Board IDW and Member of the Advisory Board Solon-X

Deputy-CEO IDR

Member of Presidium Lateinamerika Verein

Honorary Judge LG Berlin

Member of the Board of Trustees „Deutsche Schutzgemeinschaft für Wertpapierbesitzer (DSW)“

COOPERATION FRANKFURT SCHOOL – RÖDL & PARTNER

... driving CSRD /ESG

FRANKFURT SCHOOL

Rödl & Partner



CERTIFICATE

Martin Wambach

has completed the certificate programme

Rödl & Partner ESG-Academy®

and obtained the title

Certified Sustainability Assurance Expert

The program started on September 3, 2024 and ended on October 22, 2024. It included six 90-minute and two 45-minute live online sessions on the following topics:

- Module 1: The Evolution of Sustainability Reporting
- Module 2: Structure & Principles of ESRS Reporting
- Module 3: Climate Change & Pollution
- Module 4: Ecosystems & Circular Economy
- Module 5: Own Workforce & Workers in the Value Chain
- Module 6: Affected Communities, Consumers & Business Conduct
- Module 7: ESG & Financial Markets
- Module 8: References to Risk Management & the Future of Reporting
- Module 9: Audit of Sustainability Reports

The competence was acquired by working on case studies, completing digital self-tests, studying eLearnings and attending live online sessions on the above-mentioned topics.

Frankfurt am Main, November 6, 2024

Prof. Dr. Jörg Werner

Professor of Accounting
Frankfurt School
of Finance & Management

Jasmin Engel

Director Executive Education
Frankfurt School
of Finance & Management

Dr. Christian Maier

Wirtschaftsprüfer/ CPA (U.S.)
Rödl & Partner

Credential ID 121898215



Senior Education and Training

Rödl & Partner ESG-Academy: Already more than 200 participants; mandatory for every auditor

Academic Partnership

Dr. Christian Maier and Volker Hofmann support Bachelor Studies of „Consulting & Finance“ in the module „Accounting & Business Environment“. Topics: Sustainable Finance, Riskmanagement and Sustainability Reporting

On-Site: Frankfurt School Campus and facilities are part of our Rödl Air Campus

AGENDA

1	Rödl & Partner: Who we are
2	Adapting to transformation
3	Impact of Sustainability on Rödl & Partner
4	Deep-Dive into Businessline Audit
5	Talent Requirements
6	Summary
7	Contact

1 RÖDL & PARTNER: WHO WE ARE

A SUCCESS STORY FROM GERMANY

- Founded in 1977 as a single practice in Nuremberg
- An international acting, Germany based MDP (multi-disciplinary practice)



- Unique business modell
 - No network; ONE firm
 - Fully interdisciplinary
 - Specialized on Global Family Owned Businesses
- 110 offices in 50 countries, 5.800 professionals
- Together with GPSA (German Professional Services Alliance) 351 offices in 96 countries
- Revenues:
 - 2023: 663 Mio. EUR
 - 2024: 760 Mio. EUR (est.)

1 RÖDL & PARTNER: PERCEPTION AND POSITIONING

Reputation-Ranking of Audit Firms in Germany


**Deutschlands
 beste
 Wirtschaftsprüfer
 2024/25**
Champion
manager magazin
*Top 10 der
 leistungsstärksten
 Wirtschaftsprüfer*
 beste-wirtschaftspruefer.de

ALL SEGMENTS (Großunternehmen, gehobener Mittelstand, Mittelstand, Banken/Versicherungen)			
Rang	Wettbewerber	Bewertung*	σ^{**}
1	PwC	254	110
2	KPMG	247	116
3	Deloitte	219	116
4	EY	116	95
5	Rödl & Partner	75	142
6	BDO	73	141
7	Ebner Stolz	62	146
8	Mazars	26	141
9	Baker Tilly	21	155
10	Grant Thornton	19	150

MITTELSTAND (Unternehmen mit Umsatz bis 1 Mrd. EUR)			
Rang	Wettbewerber	Punkte*	σ^{**}
1	PwC	244	115
2	KPMG	228	125
3	Deloitte	185	131
4	Rödl & Partner	131	149
5	BDO	130	144
6	Ebner Stolz	118	147
7	EY	76	85
8	Mazars	68	146
9	Baker Tilly	59	160
10	Grant Thornton	49	145

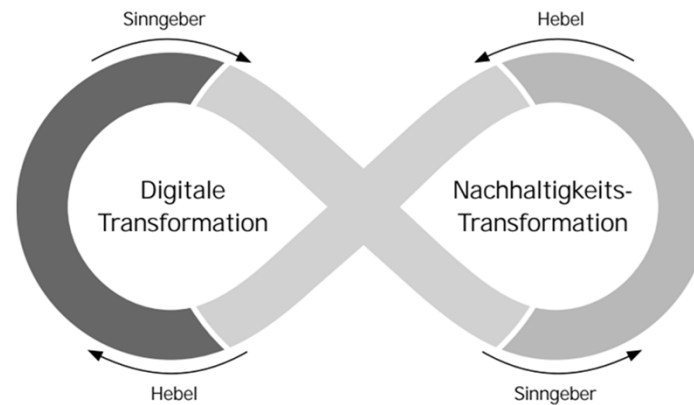
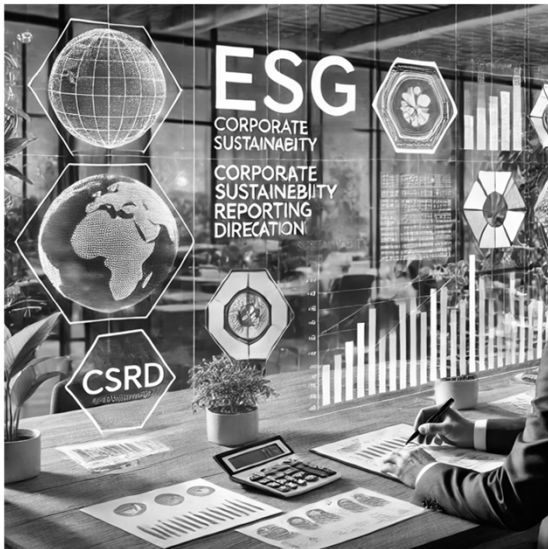

**Deutschlands
 beste
 Wirtschaftsprüfer
 2024/25**
Best in Class
manager magazin
ESG/Nachhaltigkeit
 beste-wirtschaftspruefer.de

Quelle: WGM – Wissenschaftliche Gesellschaft für Management und Beratung mbH, manager magazin

2 ADAPTING TO TRANSFORMATION

RELEVANCE OF CSRD/ESG FOR RÖDL & PARTNER

Sustainability/ESG and Digital Transformation are powerful drivers for change; they go hand-in-hand!



Transformation - gains are not a matter of size, but of strategy, realization and speed!

3 IMPACT OF SUSTAINABILITY ON RÖDL & PARTNER

CLIENTSSPHERE/ SERVICEPORTFOLIO

INDUSTRY TRANSITION	ESG REPORTING & PROCESS ADVISORY	SUSTAINABLE SUPPLY CHAINS
ENVIRONMENTAL LAW & RENEW- ABLES	ESG AUDIT	GREEN CLAIMS & LITIGATION
SUSTAINABLE FINANCE	ESG DUE DILIGENCE & VALUATION	ESG TAXES & LEVIES

EMPLOYER BRANDING/ TALENTPOOL/ RESPONSIBILITY

Rödl & Partner

GEMEINSAM WACHSEN

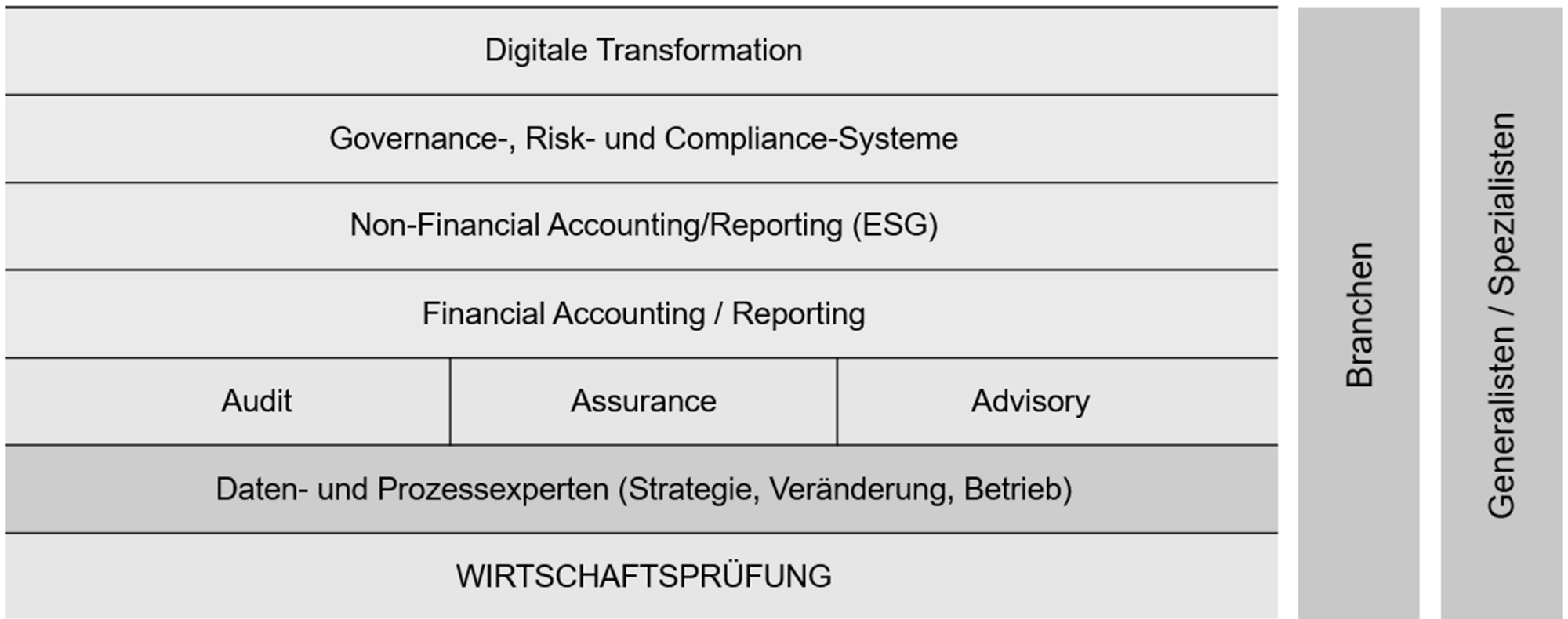
Report
2021/2022

Wie Rödl & Partner Nachhaltigkeit lebt
Beratung mit Respekt für Mensch und Natur

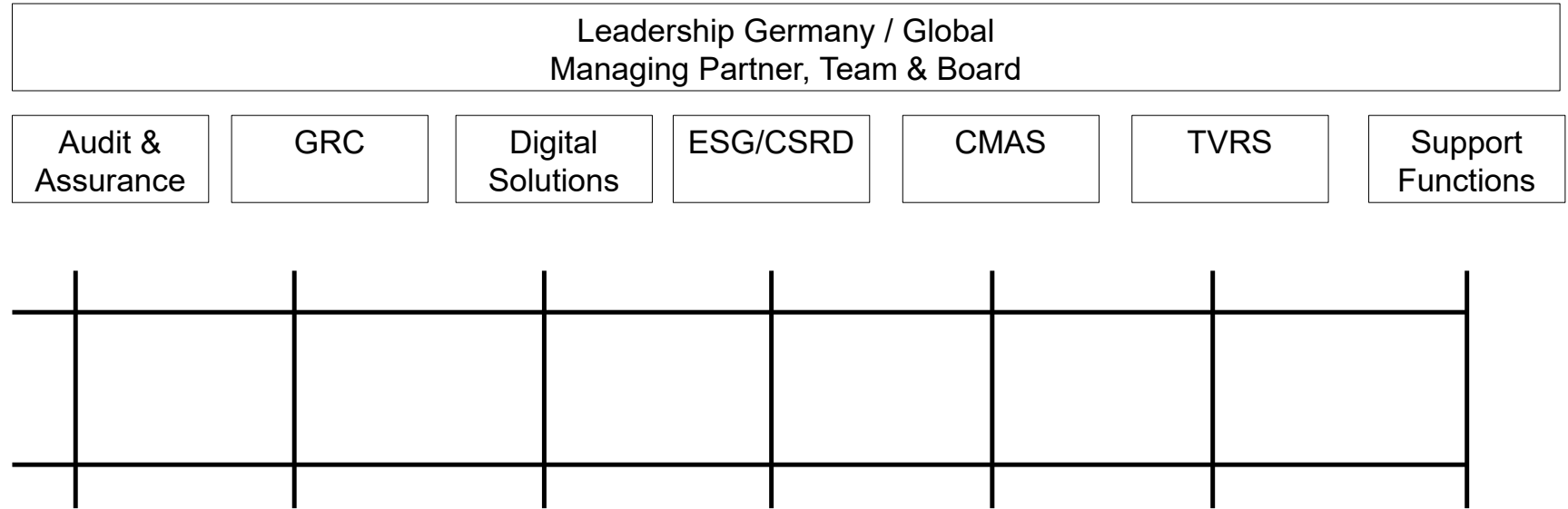


4 DEEP-DIVE INTO BUSINESSLINE AUDIT

The strategic shape of the businessline Audit follows our fundamental understanding of a modern audit practice, which centers the demands our clients and drives our employer attractiveness



4 ORGANIZATION OF BUSINESSLINE AUDIT



Matrix organization combining functional specialization and geographical orientation

4 AUDITING @ RÖDL & PARTNER

„Sustainable Assurance and Advisory“

- ▶ Sustainable Assurance and Advisory means that we have a fully integrated understanding of all our activities across the aspects of finance, sustainability and technology.
- ▶ Integrated Leadership - Integrated Accounting – Integrated Reporting – Integrated Assurance & Advisory Services.
- ▶ All Rödl & Partner’s advisory and assurance services are designed to create concrete added value and to contribute to the sustainable business success of our clients.
- ▶ We are the sustainable SUCCESS COMPANION for our clients



5 IDEAL PERSONALITY PROFILE FOR ENTRY-LEVEL PROFESSIONALS OR UNIVERSITY GRADUATES – WHAT WE NEED?

- ▶ Professional Qualification
 - ▶ valid academic track-record; (master) degree in a relevant field; Interdisciplinary studies.
 - ▶ (very) good knowledge Sustainability/CSRD/ESG; (strong) digitization/IT-skills
 - ▶ Proficient English language skills
- ▶ Personal Attributes
 - ▶ Analytical Skills
 - ▶ Attention to detail
 - ▶ Willingness to learn, resilient, hardworking, enthusiastic about work
 - ▶ Teamwork
- ▶ Soft Skills
 - ▶ Communication skills
 - ▶ Time management; autonomous working
 - ▶ Critical thinking, courage to make decisions
- ▶ Practical Experience and additional qualifications
 - ▶ Internships, Certifications (interest in pursuing additional qualifications), inter-cultural experience, open-minded, self-motivation



„Sustainability has come to stay “

- ▶ Sustainable and Digital transformation are key essentials für entrepreneurial success. They need to be embraced.
- ▶ Professional Services Firm are impacted from two sides: Client-sphere and company itself
- ▶ Sustainability enlarges the attractiveness fo typical audit & accounting firms. Sustainability pays into purpose of work.
- ▶ Sustainability enlarges the talent-pool and opens new recruiting perspectives
- ▶ Universities are the No. 1 source for professional talent for PSF
- ▶ All studies should be (very much) enriched by Sustainability and digital skills
- ▶ Universities should support international and interdisciplinary studies
- ▶ Universities should closly partner with professional practices/firms

CONTACT PERSON



MARTIN WAMBACH

Rödl & Partner
Kranhaus 1, Im Zollhafen 18
50678 Köln

T +49 221 94 99 09-100
M +49 171 633 2539
martin.wambach@roedl.com